

**Building Permit Services**

Afsaneh Ahmadi  
Campus Building Official

**Business Intelligence**

Greg Colf  
Director

**Campus Planning**

Alicia Murasaki  
Assistant Vice Chancellor  
Campus Architect

**Campus Design & Construction**

Scott Muxen  
Associate Vice Chancellor

**Health Design & Construction**

James Pease  
Executive Director

**Health Major Capital Projects**

Stuart Eckblad  
Vice President

**Finance, Administration & Operations**

Darlene Yee  
Director

**Real Estate Services**

Bruce Lanyon  
Assistant Vice Chancellor

Building Permit Services  
5 FTE  
5 Consultants

Business Intelligence  
17 FTE  
1 Consultant

Campus Planning  
11 FTE

Campus Design and Construction  
31 FTE  
17 Consultants

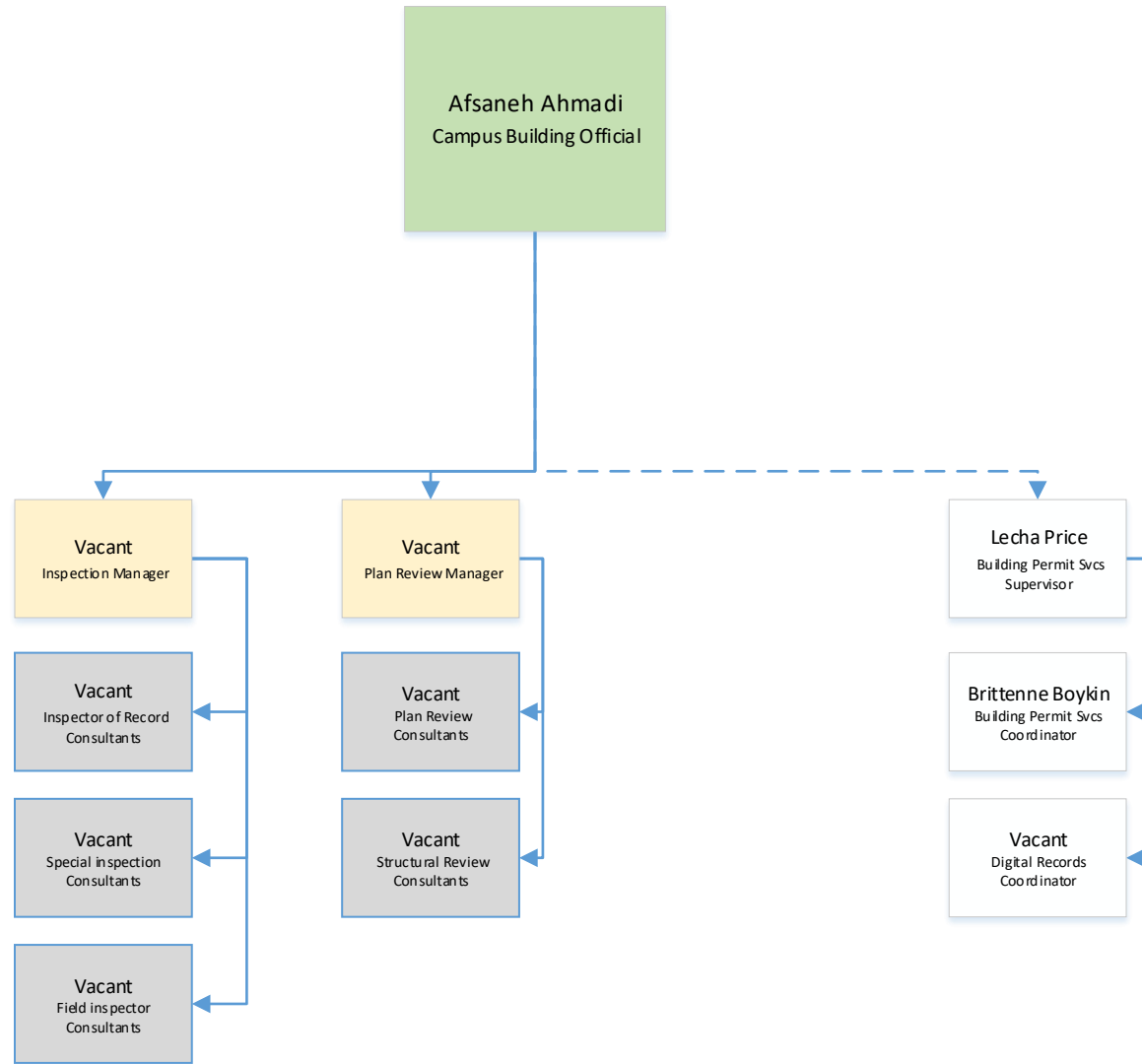
Health Design and Construction  
65-73 FTE  
11 Consultants

Health Major Capital Projects  
21 FTE  
8 Consultants

Finance, Administration & Operations  
19 FTE

Real Estate Services  
13 FTE

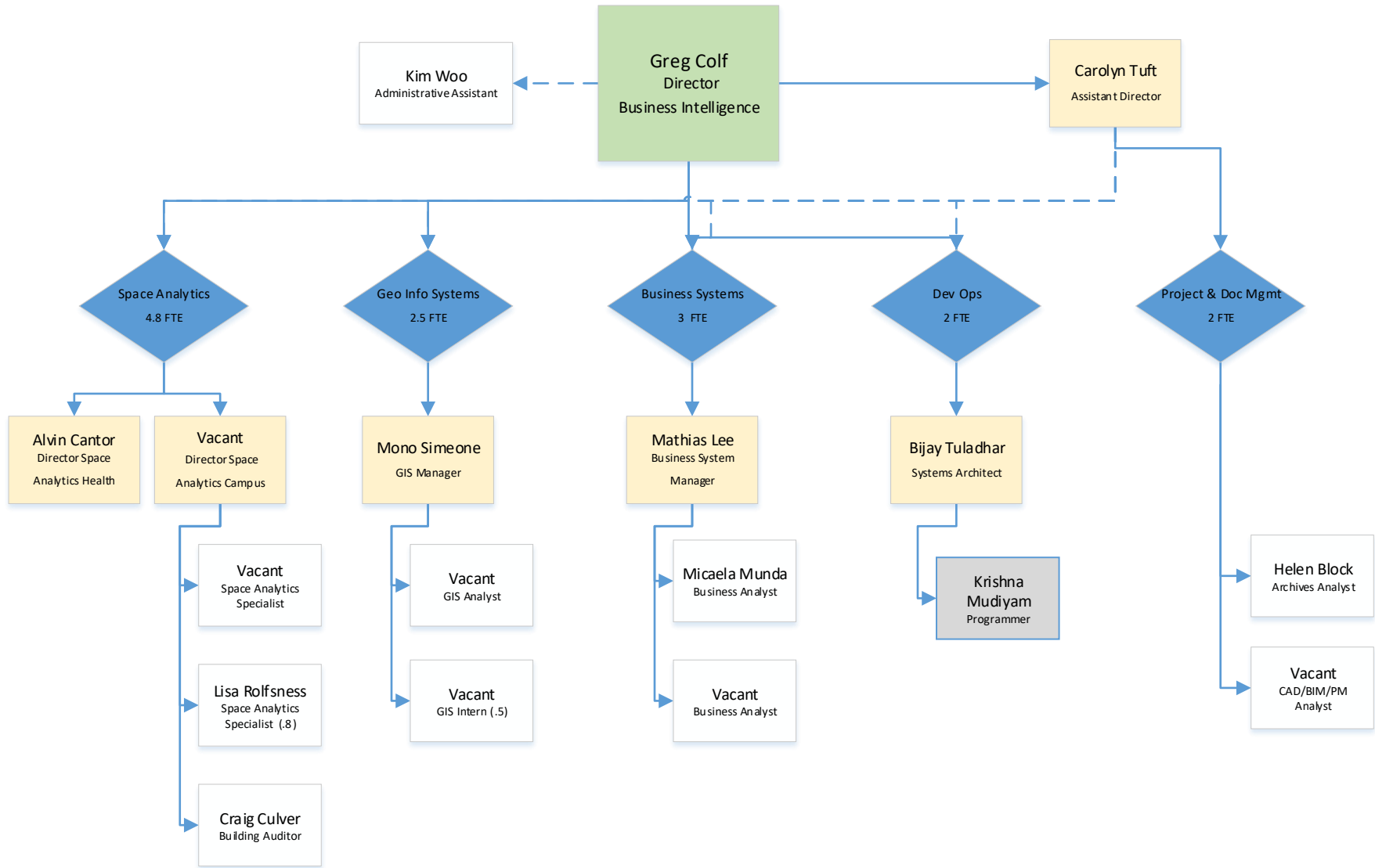
UCSF Real Estate  
Total FTE  
182 -190 FTE  
42 Consultants



Direct Reports

UCSF Staff

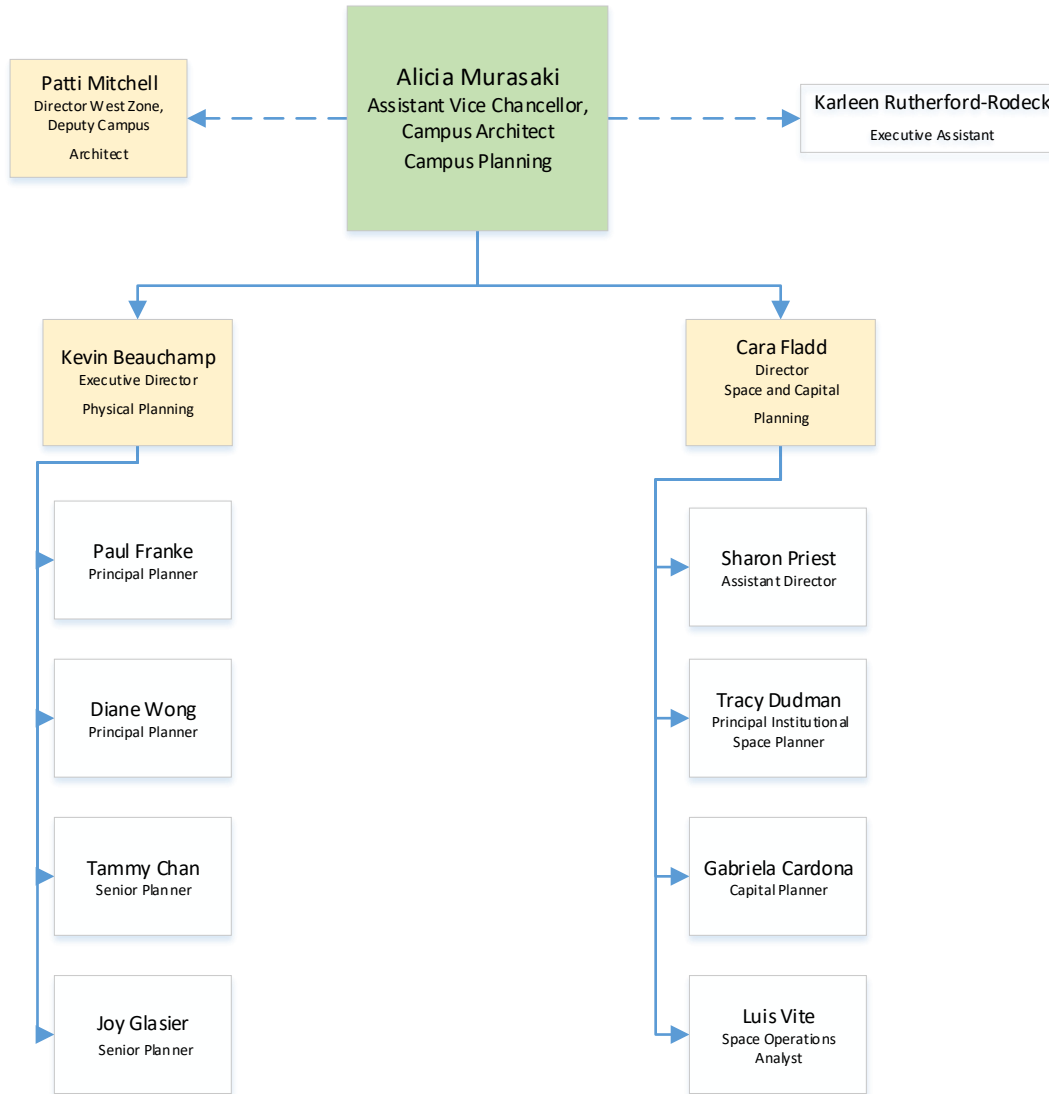
Consultants



Direct Reports

UCSF Staff

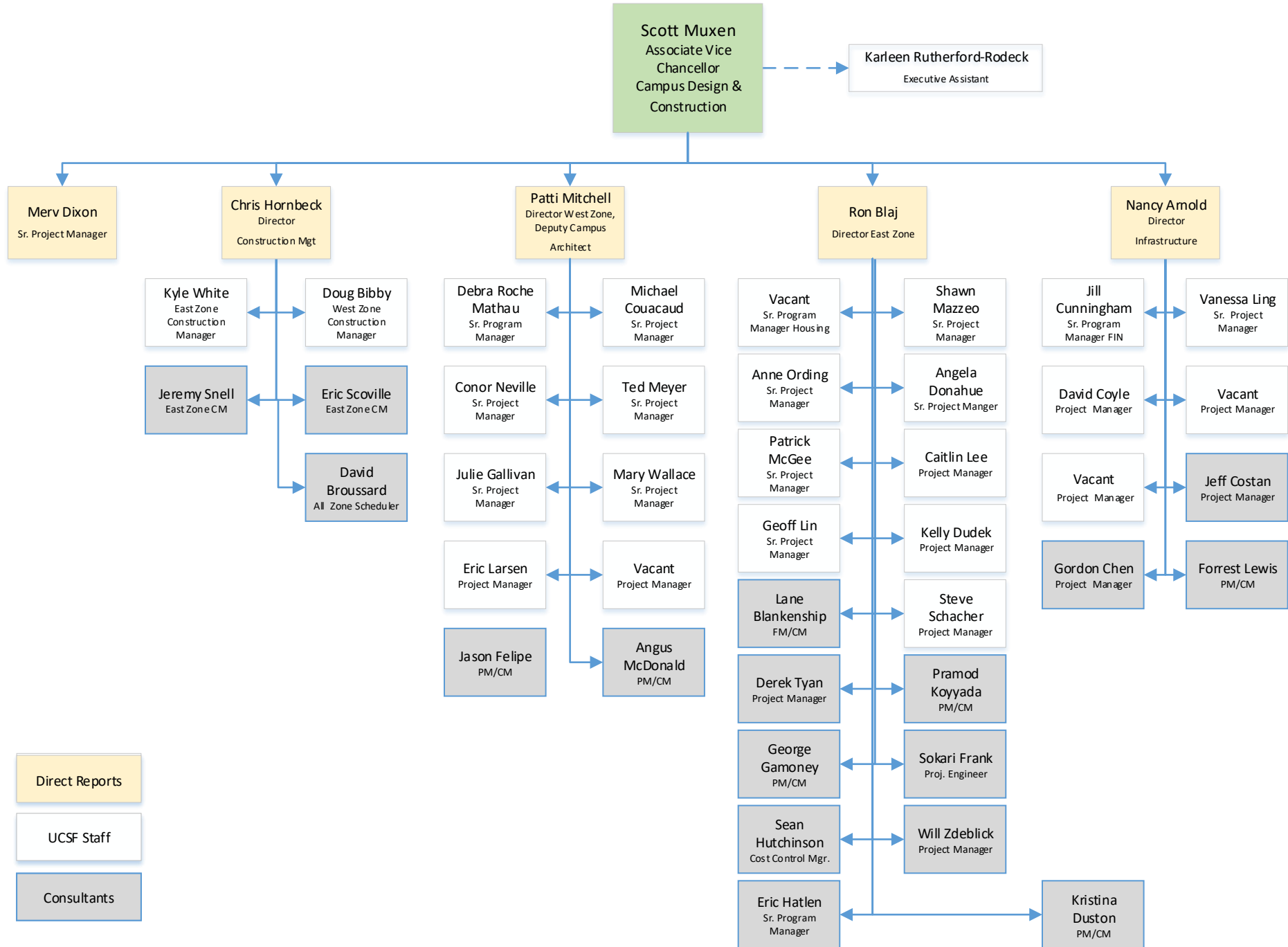
Consultants

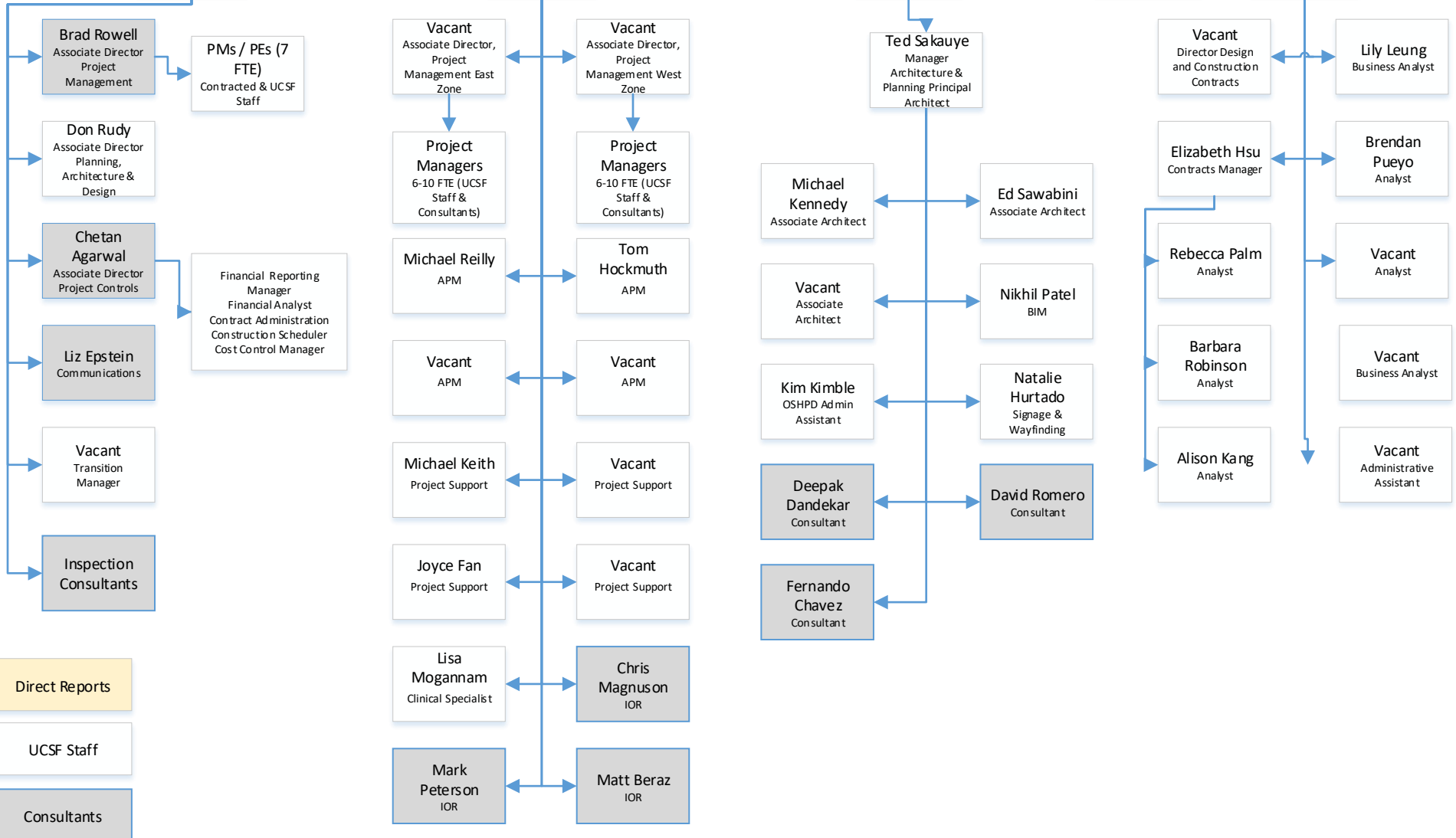
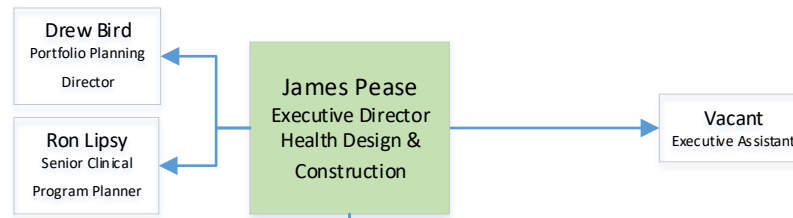


Direct Reports

UCSF Staff

Consultants

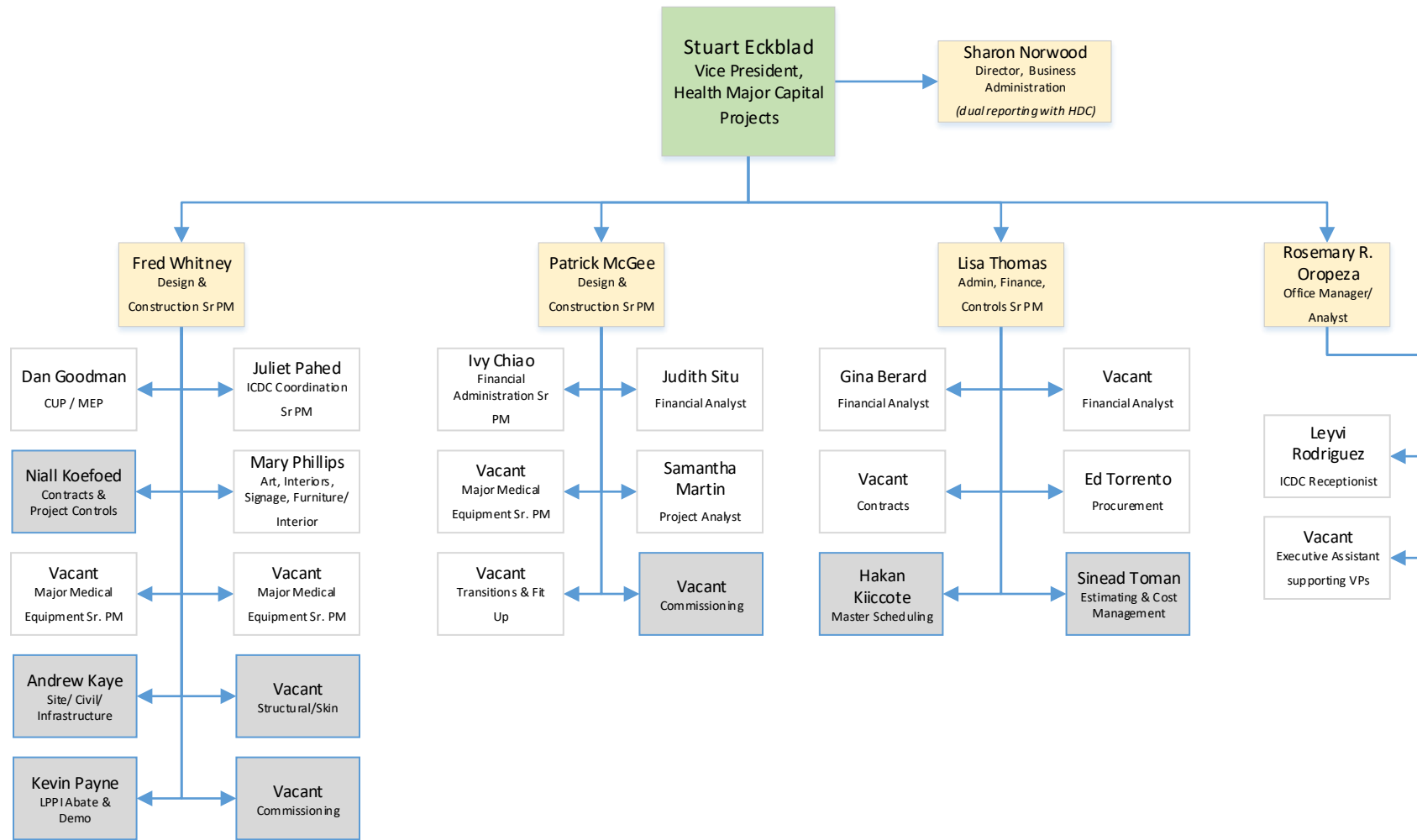




**Direct Reports**

UCSF Staff

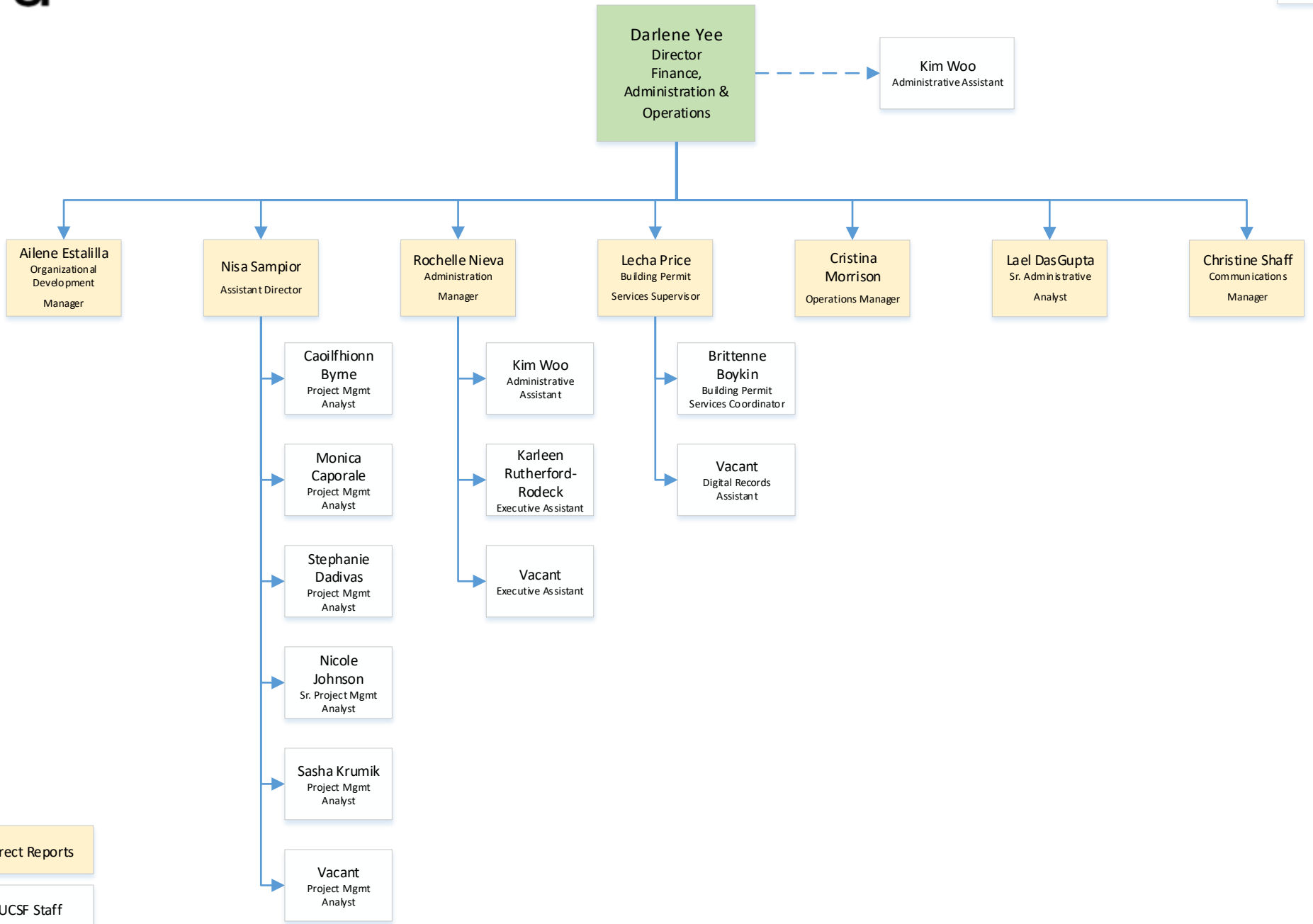
Consultants



Direct Reports

UCSF Staff

Consultants

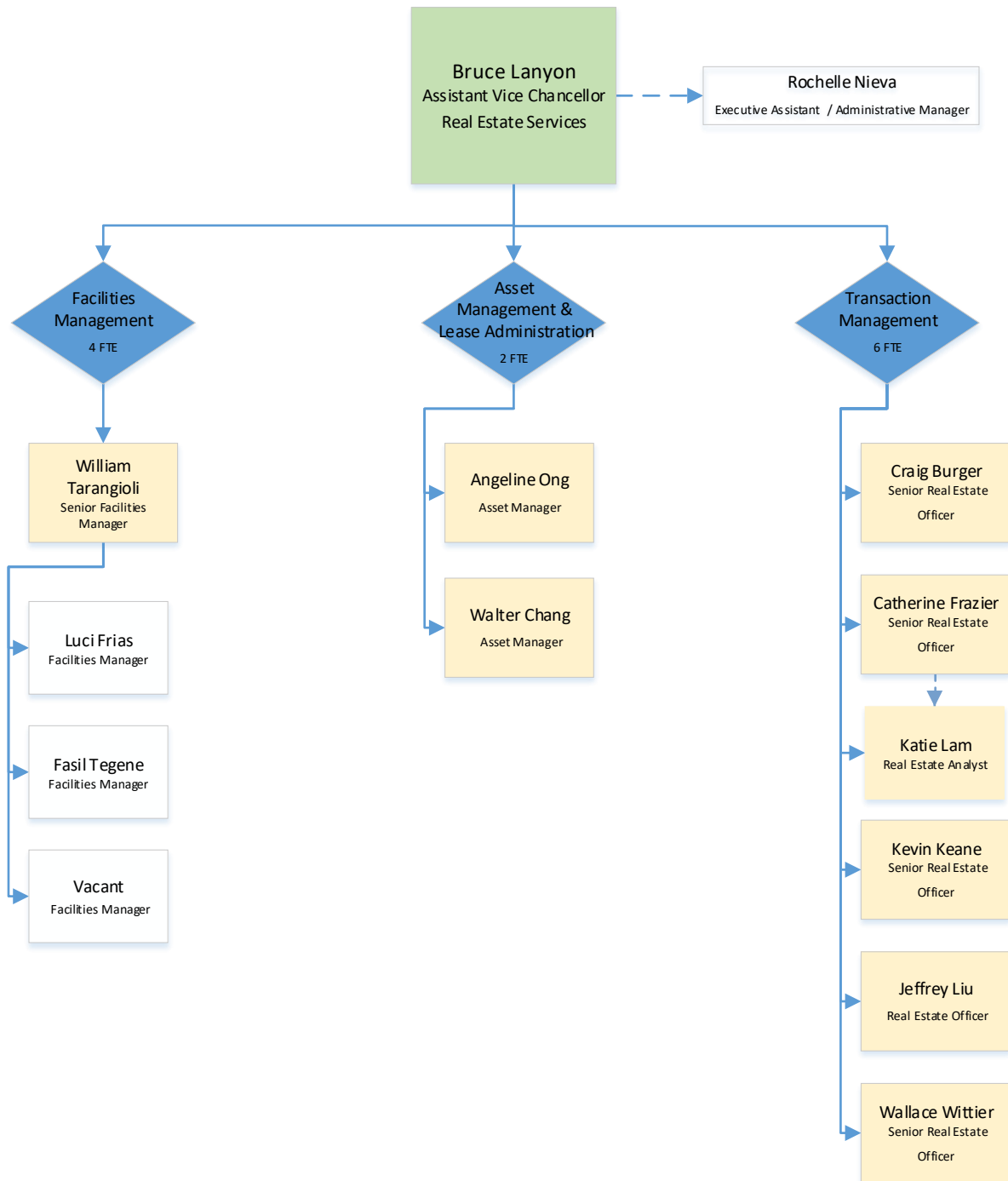


Direct Reports

UCSF Staff

Consultants





Direct Reports

UCSF Staff

Consultants